

REV.
D

AS4309

RATIONALE

CORRECTED END 1 TO STYLE "E" IN FIGURE 1. UPDATED NOTE /4/ TO DELETE "PRI" STATEMENT AND CORRECT THE NADCAP SCOPE TO AC7112, AC7112/2 ADDED USAGE/CAUTIONARY STATEMENT TO NOTE /1A/.

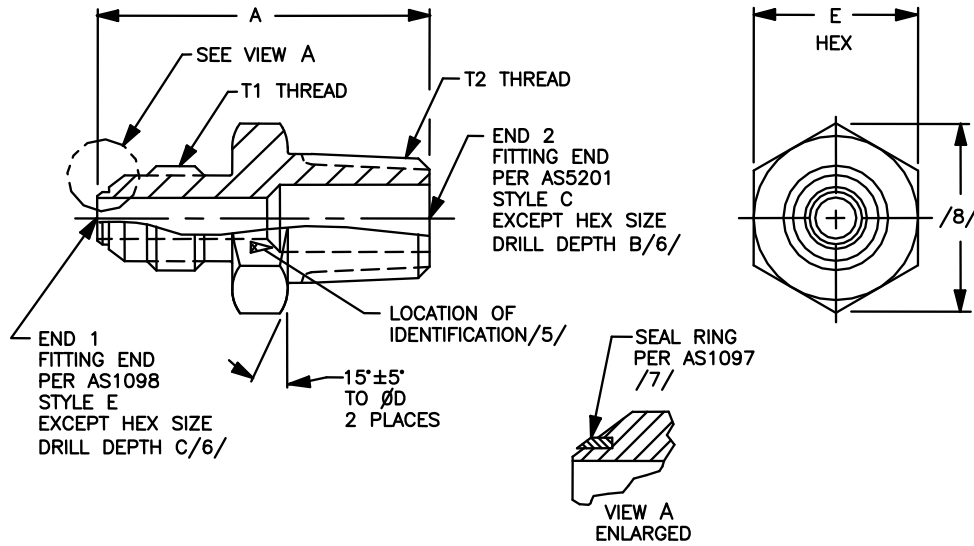
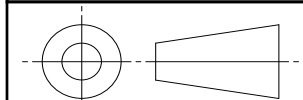


FIGURE 1 - FITTING, NIPPLE, FLARED TUBE TO PIPE THREAD

SAE values your input. To provide feedback on this Technical Report, please visit <http://www.sae.org/technical/standards/AS4309D>

THIRD ANGLE PROJECTION



CUSTODIAN: G-3/G-3B

PROCUREMENT SPECIFICATION: /4/ KSC-F-124



AEROSPACE STANDARD

FITTING, NIPPLE, FLARED TUBE TO PIPE THREAD, FOR SEAL RING

AS4309
SHEET 1 OF 4

REV.
D

SAE Technical Standards Board Rules provide that: "This report is published by SAE to advance the state of technical and engineering sciences. The use of this report is entirely voluntary, and its applicability and suitability for any particular use, including any patent infringement arising therefrom, is the sole responsibility of the user." SAE reviews each technical report at least every five years at which time it may be revised, reaffirmed, stabilized, or cancelled. SAE invites your written comments and suggestions.

ISSUED 1993-08 REAFFIRMED 2001-12 REVISED 2015-03

TABLE 1 - DIMENSIONS AND WEIGHTS

BASIC NUMBER AS4309 /16/ SIZE CODE	(NOMINAL TUBE SIZE) END 1	T1 THREAD PER AS8879 CLASS 3A END 1	(NOMINAL PIPE SIZE) END 2	T2 THREAD PER AS71051 A						LB/EA APPROX REF ALUM	LB/EA APPROX REF CRES
				ANPT END 2	+0.000 -0.075	B	C	D ±.010	E		
0402	.250	.4375-20UNJF	.125	.1250-27	1.125	.469	--	.480	.490 - .502	.0132	.0367
0404	.250	.4375-20UNJF	.250	.2500-18	1.391	.688	--	.542	.552 - .565	.0211	.0584
0602	.375	.5625-18UNJF	.125	.1250-27	1.203	--	.688	.605	.615 - .628	.0195	.0538
0604	.375	.5625-18UNJF	.250	.2500-18	1.391	.688	--	.605	.615 - .628	.0241	.0669
0606	.375	.5625-18UNJF	.375	.3750-18	1.422	.688	--	.730	.740 - .753	.0323	.0897
0608	.375	.5625-18UNJF	.500	.5000-14	1.641	.875	--	.855	.865 - .878	.0504	.140
0804	.500	.7500-16UNJF	.250	.2500-18	1.516	--	.844	.792	.802 - .815	.0412	.114
0806	.500	.7500-16UNJF	.375	.3750-18	1.516	.688	--	.792	.802 - .815	.0424	.118
0808	.500	.7500-16UNJF	.500	.5000-14	1.735	.875	--	.855	.865 - .878	.0577	.160
1004	.625	.8750-14UNJF	.250	.2500-18	1.722	--	.844	.918	.928 - .941	.0638	.177
1006	.625	.8750-14UNJF	.375	.3750-18	1.656	.812	--	.918	.928 - .941	.0590	.164
1008	.625	.8750-14UNJF	.500	.5000-14	1.844	.906	--	.918	.928 - .941	.0682	.189
1012	.625	.8750-14UNJF	.750	.7500-14	1.859	.906	--	1.103	1.113 - 1.128	.0894	.248
1204	.750	1.0625-12UNJ	.250	.2500-18	1.843	--	1.046	1.103	1.113 - 1.128	.0958	.265
1206	.750	1.0625-12UNJ	.375	.3750-18	1.859	--	1.000	1.103	1.113 - 1.128	.0967	.268
1208	.750	1.0625-12UNJ	.500	.5000-14	1.969	--	1.063	1.103	1.113 - 1.128	.0967	.268
1212	.750	1.0625-12UNJ	.750	.7500-14	1.969	.906	--	1.103	1.113 - 1.128	.103	.285
1216	.750	1.0625-12UNJ	1.000	1.0000-11.5	2.203	1.063	--	1.353	1.363 - 1.380	.152	.422
1608	1.000	1.3125-12UNJ	.500	.5000-14	2.015	--	.906	1.353	1.363 - 1.380	.134	.372
1612	1.000	1.3125-12UNJ	.750	.7500-14	2.047	--	1.094	1.353	1.363 - 1.380	.140	.388
1616	1.000	1.3125-12UNJ	1.000	1.0000-11.5	2.234	1.125	--	1.353	1.363 - 1.380	.158	.439
2012	1.250	1.6250-12UNJ	.750	.7500-14	2.140	--	1.031	1.666	1.676 - 1.693	.216	.598
2016	1.250	1.6250-12UNJ	1.000	1.0000-11.5	2.344	--	1.250	1.666	1.676 - 1.693	.231	.640
2020	1.250	1.6250-12UNJ	1.250	1.2500-11.5	2.375	1.188	--	1.728	1.676 - 1.693	.256	.710
2412	1.500	1.8750-12UNJ	.750	.7500-14	2.203	--	1.031	1.978	1.988 - 2.005	.275	.763
2416	1.500	1.8750-12UNJ	1.000	1.0000-11.5	2.453	--	1.156	1.978	1.988 - 2.005	.308	.855
2420	1.500	1.8750-12UNJ	1.250	1.2500-11.5	2.562	--	1.344	1.978	1.988 - 2.005	.332	.919
2424	1.500	1.8750-12UNJ	1.500	1.5000-11.5	2.593	1.031	--	1.978	1.988 - 2.005	.342	.946
2816	1.750	2.2500-12UNJ	1.000	1.0000-11.5	2.797	--	1.125	2.349	2.359 - 2.385	.424	1.189
2820	1.750	2.2500-12UNJ	1.250	1.2500-11.5	2.812	--	1.500	2.349	2.359 - 2.385	.456	1.277
2824	1.750	2.2500-12UNJ	1.500	1.5000-11.5	2.844	--	1.438	2.349	2.359 - 2.385	.470	1.317
3220	2.000	2.5000-12UNJ	1.250	1.2500-11.5	3.079	--	1.500	2.599	2.609 - 2.635	.581	1.627
3224	2.000	2.5000-12UNJ	1.500	1.5000-11.5	3.094	--	1.438	2.599	2.609 - 2.635	.595	1.667
3232	2.000	2.5000-12UNJ	2.000	2.0000-11.5	3.125	1.438	--	2.599	2.609 - 2.635	.648	1.817